



ALBA-CHEM VENTA-TM EXTRACTOR OWNERS MANUAL



ALBATROSS® **EXPERT. Worldwide**
www.albatross-usa.com

36-41 36th Street, P.O. Box 6446 Long Island City, NY 11106
Tel: (800) 233-4468 Fax: (718) 392-2899 e-mail: sales@albatross-usa.com

AlbaChem Venta-TM Cleaning Station

Installation Instructions

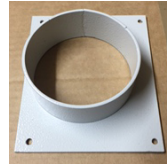
- 1) Open carton and carefully and remove contents:
 - A. Venta-TM Body
 - B. Gun Support Pole
 - C. Exhaust Port Plate
 - D. Hardware (4 screws, 1 locking knob, 4 plastic feet)
- 2) Place Venta-TM on a table at the location of your choice.
- 3) Attach 4 plastic feet.
- 4) Insert straight support pole into holder and secure with lock knob.
- 5) Attached Exhaust Port Plate to body with 4 screws (supplied).
- 6) Attach exhaust hose (not supplied). Exhaust port diameter 3 1/8".
- 7) Plug spot gun into supplied outlet on the Venta-TM.
- 8) Plug in Venta-TM.
- 9) Start vacuum via the on/off switch. Turn off vacuum when not in use.
- 10) DO NOT USE WITH FLAMMABLE LIQUIDS.

VENTA-TM PARTS DIAGRAM

#115M Gun
Pole Support



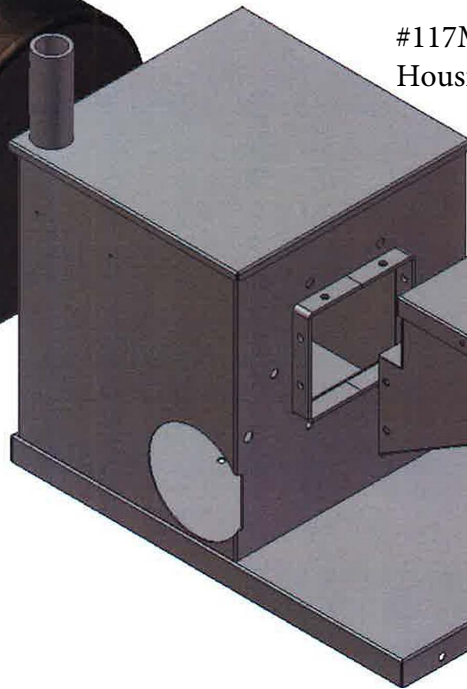
#120M
Exhaust Port Plate



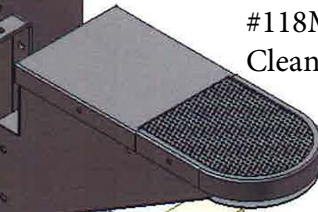
#116M Blower
w/Motor



#117M
Housing



#118M
Cleaning Buck/Arm



#119M
Electrical Box



WR NG D AGRAM "VENTA TM"

V 110

1 pH + N + pE

L1
LN

PE

SP

LN | PE L1
PR

HP

?

1

+

SP - PLUG 2P + PE USA - SASO

IA - VACUUM EXHAUSTER SWITCH

M - VACUUM EXHAUSTER

PR - SOCKET 2P + PE USA - SASO